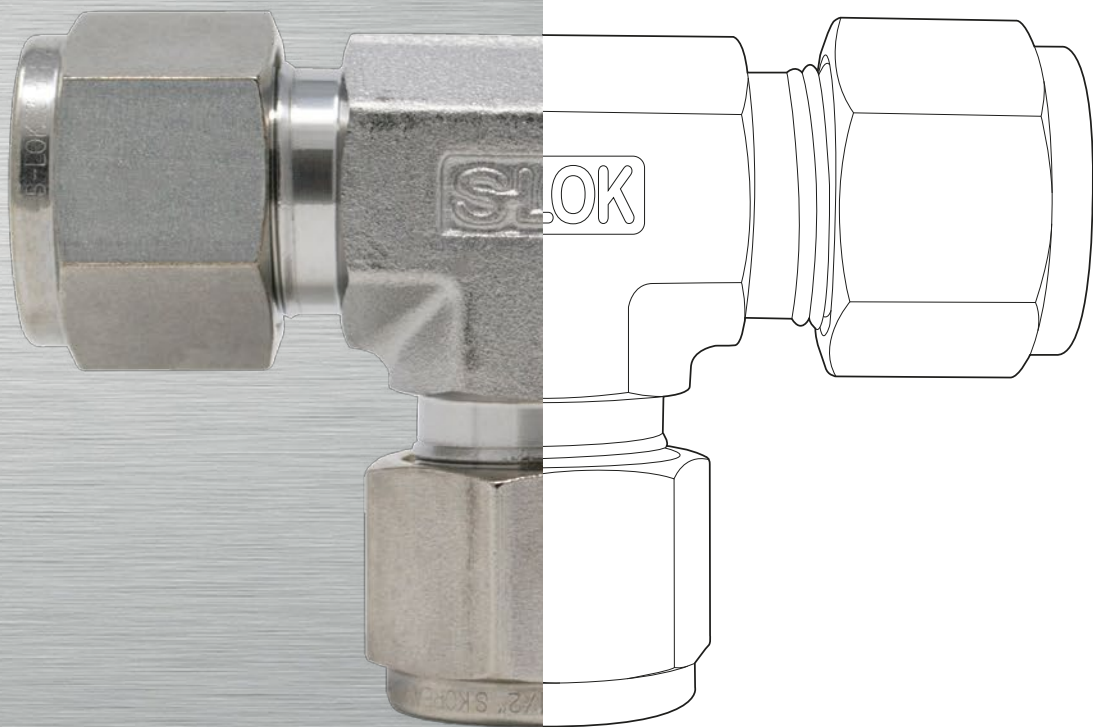




HYDROGEN COMPATIBLE PRODUCTS

CERTIFIED EC79
H35 PRESSURE CLASS

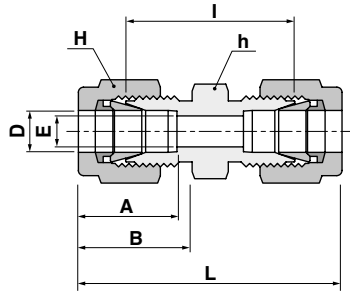




TTU (Tube to Tube Union)

Union

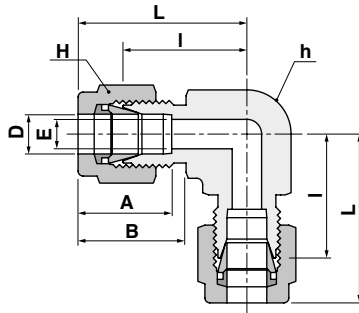
SU



Part No.	Tube O.D		E	Width across flat				A	B	I	L
	D			h		H					
	in	mm		in	mm	in	mm				
SU-4-H35	1/4	6.35	4.82	1/2	12.70	9/16	14.28	15.24	17.78	26.16	40.89
SU-5-H35	5/16	7.93	6.35	9/16	14.28	5/8	15.87	16.25	18.54	28.19	42.92
SU-6-H35	3/8	9.52	7.11	5/8	15.87	11/16	17.46	16.76	19.30	30.22	44.95
SU-8-H35	1/2	12.70	10.41	13/16	20.64	7/8	22.22	22.86	21.84	30.98	51.30
SU-10-H35	5/8	15.87	12.70	15/16	23.81	1	25.40	24.38	21.84	31.75	52.07
SU-6M-H35	-	6	4.8	-	14	-	14	15.3	17.7	26.2	41.0
SU-8M-H35	-	8	6.4	-	15	-	16	16.2	18.6	28.2	43.2
SU-10M-H35	-	10	7.9	-	18	-	19	17.2	19.5	31.0	46.2
SU-12M-H35	-	12	9.5	-	22	-	22	22.8	22.0	31.0	51.2
SU-14M-H35	-	14	11.1	-	24	-	25	24.4	22.0	31.8	52.0
SU-15M-H35	-	15	11.9	-	24	-	25	24.4	22.0	31.8	52.0
SU-16M-H35	-	16	12.7	-	24	-	25	24.4	22.0	31.8	52.0

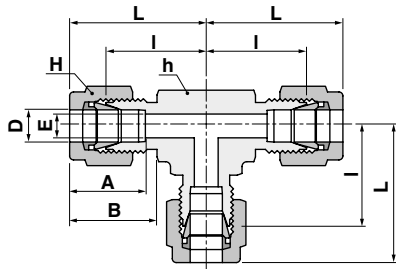
Union Elbow

SL



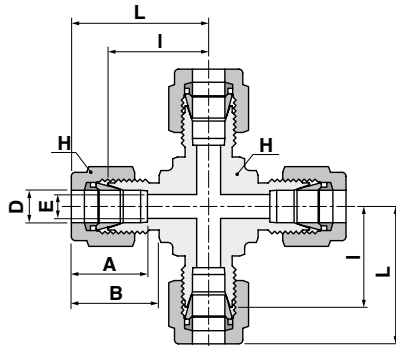
Part No.	Tube O.D		E	Width across flat				A	B	I	L
	D			h		H					
	in	mm		in	mm	in	mm				
SL-4-H35	1/4	6.35	4.82	1/2	12.70	9/16	14.28	15.24	17.78	26.16	40.89
SL-5-H35	5/16	7.93	6.35	9/16	14.28	5/8	15.87	16.25	18.54	28.19	42.92
SL-6-H35	3/8	9.52	7.11	5/8	15.87	11/16	17.46	16.76	19.30	30.22	44.95
SL-8-H35	1/2	12.70	10.41	13/16	20.64	7/8	22.22	22.86	21.84	30.98	51.30
SL-10-H35	5/8	15.87	12.70	15/16	23.81	1	25.40	24.38	21.84	31.75	52.07
SL-6M-H35	-	6	4.8	-	14	-	14	15.3	17.7	26.2	41.0
SL-8M-H35	-	8	6.4	-	15	-	16	16.2	18.6	28.2	43.2
SL-10M-H35	-	10	7.9	-	18	-	19	17.2	19.5	31.0	46.2
SL-12M-H35	-	12	9.5	-	22	-	22	22.8	22.0	31.0	51.2
SL-14M-H35	-	14	11.1	-	24	-	25	24.4	22.0	31.8	52.0
SL-15M-H35	-	15	11.9	-	24	-	25	24.4	22.0	31.8	52.0
SL-16M-H35	-	16	12.7	-	24	-	25	24.4	22.0	31.8	52.0

Union Tee

ST

Part No.	Tube O.D		E	Width across flat				A	B	I	L
	D			h		H					
	in	mm		in	mm						
ST-4-H35	1/4	6.35	4.82	1/2	12.70	9/16	14.28	15.24	17.78	26.16	40.89
ST-5-H35	5/16	7.93	6.35	9/16	14.28	5/8	15.87	16.25	18.54	28.19	42.92
ST-6-H35	3/8	9.52	7.11	5/8	15.87	11/16	17.46	16.76	19.30	30.22	44.95
ST-8-H35	1/2	12.70	10.41	13/16	20.64	7/8	22.22	22.86	21.84	30.98	51.30
ST-10-H35	5/8	15.87	12.70	15/16	23.81	1	25.40	24.38	21.84	31.75	52.07
ST-6M-H35	-	6	4.8	-	14	-	14	15.3	17.7	26.2	41.0
ST-8M-H35	-	8	6.4	-	15	-	16	16.2	18.6	28.2	43.2
ST-10M-H35	-	10	7.9	-	18	-	19	17.2	19.5	31.0	46.2
ST-12M-H35	-	12	9.5	-	22	-	22	22.8	22.0	31.0	51.2
ST-14M-H35	-	14	11.1	-	24	-	25	24.4	22.0	31.8	52.0
ST-15M-H35	-	15	11.9	-	24	-	25	24.4	22.0	31.8	52.0
ST-16M-H35	-	16	12.7	-	24	-	25	24.4	22.0	31.8	52.0

Union Cross

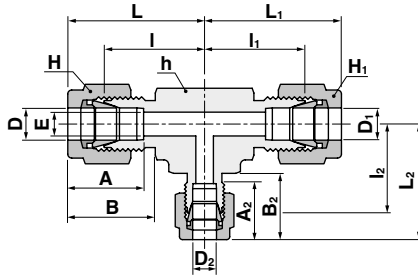
SX

Part No.	Tube O.D		E	Width across flat				A	B	I	L
	D			h		H					
	in	mm		in	mm						
SX-4-H35	1/4	6.35	4.82	1/2	12.70	9/16	14.28	15.24	17.78	26.16	40.89
SX-5-H35	5/16	7.93	6.35	9/16	14.28	5/8	15.87	16.25	18.54	28.19	42.92
SX-6-H35	3/8	9.52	7.11	5/8	15.87	11/16	17.46	16.76	19.30	30.22	44.95
SX-8-H35	1/2	12.70	10.41	13/16	20.64	7/8	22.22	22.86	21.84	30.98	51.30
SX-10-H35	5/8	15.87	12.70	15/16	23.81	1	25.40	24.38	21.84	31.75	52.07
SX-6M-H35	-	6	4.8	-	14	-	14	15.3	17.7	26.2	41.0
SX-8M-H35	-	8	6.4	-	15	-	16	16.2	18.6	28.2	43.2
SX-10M-H35	-	10	7.9	-	18	-	19	17.2	19.5	31.0	46.2
SX-12M-H35	-	12	9.5	-	22	-	22	22.8	22.0	31.0	51.2
SX-14M-H35	-	14	11.1	-	24	-	25	24.4	22.0	31.8	52.0
SX-15M-H35	-	15	11.9	-	24	-	25	24.4	22.0	31.8	52.0
SX-16M-H35	-	16	12.7	-	24	-	25	24.4	22.0	31.8	52.0



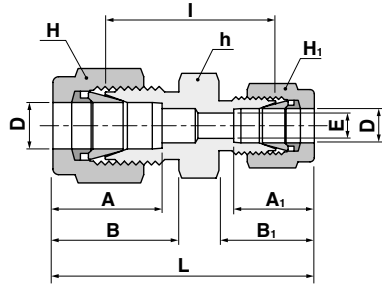
Reducing Union Tee

STR



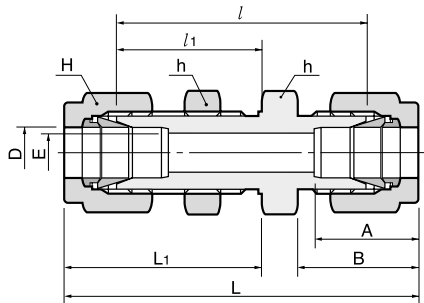
Part No.	Tube O.D							Width across flat																			
	D		D ₁		D ₂		E	A	A ₁	A ₂	B	B ₁	B ₂	h		H	H ₁		H ₂	I	l ₁	l ₂	L	L ₁	L ₂		
	in	mm	in	mm	in	mm	Min.							in	mm	in	mm	in	mm	in	mm						
STR-4-6-H35	1/4	6.35	1/4	6.35	3/8	9.52	4.82	15.24	15.24	16.76	17.78	17.78	19.30	5/8	15.87	9/16	14.28	9/16	14.28	11/16	17.46	21.92	21.92	23.10	29.28	29.28	30.46
STR-4-8-8-H35	1/4	6.35	1/2	12.70	1/2	12.70	4.82	15.24	22.86	22.86	17.78	21.84	21.84	13/16	20.64	9/16	14.28	7/8	22.22	7/8	22.22	24.40	25.90	25.90	31.76	36.06	36.06
STR-6-4-6-H35	3/8	9.52	1/4	6.35	3/8	9.52	4.82	16.76	15.24	16.76	19.30	17.78	19.30	5/8	15.87	11/16	17.46	9/16	14.28	11/16	17.46	23.10	21.92	23.10	30.46	29.28	30.46
STR-6-4-H35	3/8	9.52	3/8	9.52	1/4	6.35	4.82	16.76	16.76	15.24	19.30	19.30	17.78	5/8	15.87	11/16	17.46	11/16	17.46	9/16	14.28	23.10	23.10	21.92	30.46	30.46	29.28
STR-6-8-H35	3/8	9.52	3/8	9.52	1/2	12.70	7.11	16.76	16.76	22.86	19.30	19.30	21.84	13/16	20.64	11/16	17.46	11/16	17.46	7/8	22.22	25.90	25.90	25.90	33.26	33.26	36.06
STR-8-4-6-H35	1/2	12.70	1/4	6.35	3/8	9.52	4.82	22.86	15.24	16.76	21.84	17.78	19.30	13/16	20.64	7/8	22.22	9/16	14.28	11/16	17.46	25.90	25.90	25.90	36.06	33.26	33.26
STR-8-4-8-H35	1/2	12.70	1/4	6.35	1/2	12.70	4.82	22.86	15.24	22.86	21.84	17.78	21.84	13/16	20.64	7/8	22.22	9/16	14.28	7/8	22.22	25.90	24.40	25.90	36.06	31.76	36.06
STR-8-6-6-H35	1/2	12.70	3/8	9.52	3/8	9.52	7.11	22.86	16.76	16.76	21.84	19.30	19.30	13/16	20.64	7/8	22.22	11/16	17.46	11/16	17.46	25.90	25.90	25.90	36.06	33.26	33.26
STR-8-4-H35	1/2	12.70	1/2	12.70	1/4	6.35	4.82	22.86	22.86	15.24	21.84	21.84	17.78	13/16	20.64	7/8	22.22	7/8	22.22	9/16	14.28	25.90	25.90	24.40	36.06	36.06	31.76
STR-8-6-H35	1/2	12.70	1/2	12.70	3/8	9.52	7.11	22.86	22.86	16.76	21.84	21.84	19.30	13/16	20.64	7/8	22.22	7/8	22.22	11/16	17.46	25.90	25.90	25.90	36.06	36.06	33.26
STR-10-6-H35	5/8	15.87	5/8	15.87	3/8	9.52	7.11	24.38	24.38	16.76	21.84	21.84	19.30	15/16	23.81	1	25.40	1	25.40	11/16	17.46	28.70	28.70	28.70	38.86	38.86	36.06
STR-8M-6M-H35	-	8	-	8	-	6	4.8	16.2	16.2	15.3	18.6	18.6	17.7	-	15	-	16	-	16	-	14	21.3	21.3	20.5	28.8	28.8	28.0
STR-10M-6M-H35	-	10	-	10	-	6	4.8	17.2	17.2	15.3	19.5	19.5	17.7	-	17.4	-	19	-	19	-	14	23.9	23.9	22.4	31.5	31.5	29.8
STR-10M-12M-H35	-	10	-	10	-	12	7.9	17.2	17.2	22.8	19.5	19.5	22.0	-	20.6	-	19	-	19	-	22	25.9	25.9	25.9	33.5	33.5	36.0
STR-12M-6M-10MH35	-	12	-	6	-	10	4.8	22.8	15.3	17.2	22.0	17.7	19.5	-	20.6	-	22	-	14	-	19	25.9	24.4	25.9	36.0	31.8	33.5
STR-12M-6M-12MH35	-	12	-	6	-	12	4.8	22.8	15.3	22.8	22.0	17.7	22.0	-	20.6	-	22	-	14	-	22	25.9	24.4	25.9	36.0	31.8	36.0
STR-12M-10M-10MH35	-	12	-	10	-	10	7.9	22.8	17.2	17.2	22.0	19.5	19.5	-	20.6	-	22	-	19	-	19	25.9	25.9	25.9	36.0	33.5	33.5
STR-12M-10M-H35	-	12	-	12	-	10	7.9	22.8	22.8	17.2	22.0	22.0	19.5	-	20.6	-	22	-	22	-	19	25.9	25.9	25.9	36.0	36.0	33.5
STR-12M-6M-H35	-	12	-	12	-	6	4.8	22.8	22.8	15.3	22.0	22.0	17.7	-	20.6	-	22	-	22	-	14	25.9	25.9	24.4	36.0	36.0	31.8
STR-15M-12M-H35	-	15	-	15	-	12	9.8	24.4	24.4	22.8	28.7	28.7	22.0	-	23.8	-	25	-	25	-	22	28.7	28.7	28.7	38.8	38.8	38.8
STR-16M-12M-H35	-	16	-	16	-	12	9.8	24.4	24.4	22.8	28.7	28.7	22.0	-	23.8	-	25	-	25	-	22	28.7	28.7	28.7	38.8	38.8	38.8

Reducing Union
SUR



Part No.	Tube O.D				E	Width across flat						A	A ₁	B	B ₁	I	L
	D		D ₁			h		H		H ₁							
	in	mm	in	mm		in	mm	in	mm	in	mm						
SUR-5-4-H35	5/16	7.93	1/4	6.35	4.82	9/16	14.28	5/8	15.87	9/16	14.28	16.25	15.24	18.54	17.78	27.43	42.16
SUR-6-4-H35	3/8	9.52	1/4	6.35	4.82	5/8	15.87	11/16	17.46	9/16	14.28	16.76	15.24	19.30	17.78	28.44	43.18
SUR-6-5-H35	3/8	9.52	5/16	7.93	6.35	5/8	15.87	11/16	17.46	5/8	15.87	16.76	16.25	19.30	18.54	29.46	44.19
SUR-8-4-H35	1/2	12.70	1/4	6.35	4.82	13/16	20.64	7/8	22.22	9/16	14.28	22.86	15.24	21.84	17.78	29.46	46.99
SUR-8-6-H35	1/2	12.70	3/8	9.52	7.11	13/16	20.64	7/8	22.22	11/16	17.46	22.86	16.76	21.84	19.30	30.98	48.51
SUR-10-6-H35	5/8	15.87	3/8	9.52	7.11	15/16	23.81	1	25.40	11/16	17.46	24.38	16.76	21.84	19.30	31.75	49.27
SUR-10-8-H35	5/8	15.87	1/2	12.70	10.41	15/16	23.81	1	25.40	7/8	22.22	24.38	22.86	21.84	21.84	31.75	52.07
SUR-8M-6M-H35	-	8	-	6	4.8	-	15	-	16	-	14	16.2	15.3	18.6	17.7	27.4	42.3
SUR-10M-6M-H35	-	10	-	6	4.8	-	18	-	19	-	14	17.2	15.3	19.5	17.7	29.5	44.5
SUR-10M-8M-H35	-	10	-	8	6.4	-	18	-	19	-	16	17.2	16.2	19.5	18.6	30.3	45.1
SUR-12M-6M-H35	-	12	-	6	4.8	-	22	-	22	-	14	22.8	15.3	22.0	17.7	29.5	47.0
SUR-12M-8M-H35	-	12	-	8	6.4	-	22	-	22	-	16	22.8	16.2	22.0	18.6	30.2	47.8
SUR-12M-10M-H35	-	12	-	10	7.9	-	22	-	22	-	19	22.8	17.2	22.0	19.5	31.0	48.7
SUR-16M-10M-H35	-	16	-	10	7.9	-	24	-	25	-	19	24.4	17.2	22.0	19.5	31.8	49.5
SUR-16M-12M-H35	-	16	-	12	9.5	-	24	-	25	-	22	24.4	22.8	22.0	22.0	31.8	52.0

Bulkhead Union
SUB



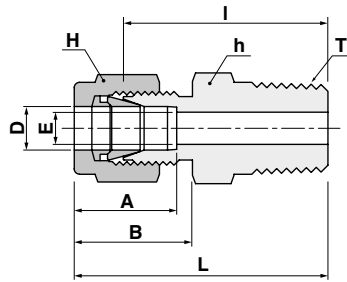
Part No.	Tube O.D		E	Width across flat				A	B	I	I ₁	L	L ₁	Panel Hole Drill Size	Panel Max. Thickness
	D			h		H									
	in	mm		in	mm	in	mm								
SUB-4-H35	1/4	6.35	4.82	5/8	15.87	9/16	14.28	15.24	17.78	42.92	26.16	57.65	33.52	11.50	10.16
SUB-5-H35	5/16	7.93	6.35	11/16	17.46	5/8	15.87	16.25	18.54	45.97	28.44	60.70	35.81	13.09	11.17
SUB-6-H35	3/8	9.52	7.11	3/4	19.05	11/16	17.46	16.76	19.30	47.49	29.46	62.23	36.83	14.68	11.17
SUB-8-H35	1/2	12.70	10.41	15/16	23.81	7/8	22.22	22.86	21.84	50.80	31.75	71.10	41.91	19.44	12.70
SUB-10-H35	5/8	15.87	12.70	1-1/16	26.98	1	25.40	24.38	21.84	52.32	32.51	72.64	42.67	22.62	12.70
SUB-6M-H35	-	6	4.8	-	16	-	14	15.3	17.7	42.9	26.2	57.7	33.6	11.5	10.2
SUB-8M-H35	-	8	6.4	-	18	-	16	16.2	18.6	46.0	28.6	61.0	36.1	13.1	11.2
SUB-10M-H35	-	10	7.9	-	22	-	19	17.2	19.5	48.5	29.4	63.7	37.0	16.2	11.2
SUB-12M-H35	-	12	9.5	-	24	-	22	22.8	22.0	50.8	31.8	71.0	41.9	19.5	12.7
SUB-14M-H35	-	14	11.1	-	27	-	25	24.4	22.0	52.3	32.5	72.5	42.6	22.8	12.7
SUB-15M-H35	-	15	11.9	-	27	-	25	24.4	22.0	52.3	32.5	72.5	42.6	22.8	12.7
SUB-16M-H35	-	16	12.7	-	27	-	25	24.4	22.0	52.3	32.5	72.5	42.6	22.8	12.7



↗ TMP (Tube to Male Pipe)

Male Connector

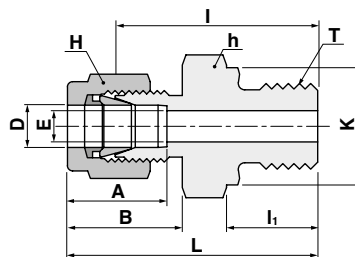
SMC



Part No.	Tube O.D.		T	E	Width across flat				A	B	I	L
	D				h		H					
	in	mm			in	mm	in	mm				
SMC-4-4N-H35	1/4	6.35	1/4NPT	4.82	9/16	14.28	9/16	14.28	15.24	17.78	30.48	37.84
SMC-5-4N-H35	5/16	7.93	1/4NPT	6.35	9/16	14.28	5/8	15.87	16.25	18.54	31.24	38.60
SMC-6-4N-H35	3/8	9.52	1/4NPT	7.11	5/8	15.87	11/16	17.46	16.76	19.30	32.51	39.87
SMC-8-4N-H35	1/2	12.70	1/4NPT	10.41	13/16	20.64	7/8	22.22	22.86	21.84	33.27	43.43
SMC-6M-4R-H35	-	6	1/4PT	4.8	-	14	-	14	15.3	17.7	30.2	37.6
SMC-8M-4R-H35	-	8	1/4PT	6.4	-	15	-	16	16.2	18.6	31.2	38.7
SMC-10M-4R-H35	-	10	1/4PT	7.9	-	18	-	19	17.2	19.5	33.3	40.9
SMC-12M-4R-H35	-	12	1/4PT	9.5	-	22	-	22	22.8	22.0	33.3	43.4
SMC-16M-4R-H35	-	16	1/4PT	12.7	-	24	-	25	24.4	22.0	34.0	44.1
SMC-6M-4N-H35	-	6	1/4NPT	4.8	-	14	-	14	15.3	17.7	30.2	37.6
SMC-8M-4N-H35	-	8	1/4NPT	6.4	-	15	-	16	16.2	18.6	31.2	38.7
SMC-10M-4N-H35	-	10	1/4NPT	7.9	-	18	-	19	17.2	19.5	33.3	40.9
SMC-12M-4N-H35	-	12	1/4NPT	9.5	-	22	-	22	22.8	22.0	33.3	43.4
SMC-16M-4N-H35	-	16	1/4NPT	12.7	-	24	-	25	24.4	22.0	34.0	44.1
SMC-4-4G-H35	1/4	6.35	1/4PF	4.82	3/4	19.05	9/16	14.28	15.24	17.78	30.23	37.59
SMC-6-4G-H35	3/8	9.52	1/4PF	7.11	3/4	19.05	11/16	17.46	16.76	19.30	31.75	39.12
SMC-8-4G-H35	1/2	12.70	1/4PF	10.41	13/16	20.64	7/8	22.22	22.86	21.84	32.51	42.67
SMC-6M-4G-H35	-	6	1/4PF	4.8	-	19	-	14	15.3	17.7	30.2	37.6
SMC-8M-4G-H35	-	8	1/4PF	6.4	-	19	-	16	16.2	18.6	31.0	38.5
SMC-10M-4G-H35	-	10	1/4PF	7.9	-	19	-	19	17.2	19.5	31.8	39.4
SMC-12M-4G-H35	-	12	1/4PF	9.5	-	22	-	22	22.8	22.0	32.5	42.6

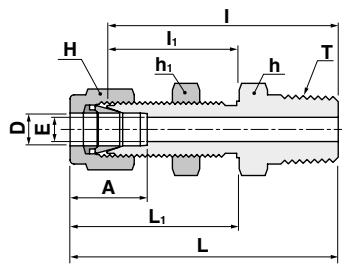
Male Connector
for Metal Gasket

SOM



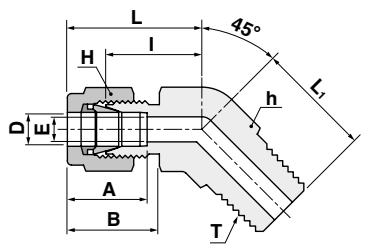
Part No.	Tube O.D.		T	E	Width across flat				A	B	I	I ₁	L	K
	D				h		H							
	in	mm			in	mm	in	mm						
SOM-4-4G-H35	1/4	6.35	1/4	4.82	3/4	19.05	9/16	14.28	15.24	17.78	30.23	11.18	37.59	18.03
SOM-6-4G-H35	3/8	9.52	1/4	7.11	3/4	19.05	11/16	17.46	16.76	19.30	31.75	11.18	39.12	18.03
SOM-8-4G-H35	1/2	12.70	1/4	10.41	13/16	20.64	7/8	22.22	22.86	21.84	32.51	11.18	42.67	18.03
SOM-6M-4G-H35	-	6	1/4	4.8	-	19	-	14	15.3	17.7	30.2	11.2	37.6	18.0
SOM-8M-4G-H35	-	8	1/4	6.4	-	19	-	16	16.2	18.6	31.0	11.2	38.5	18.0
SOM-10M-4G-H35	-	10	1/4	7.9	-	19	-	19	17.2	19.5	31.8	11.2	39.4	18.0
SOM-12M-4G-H35	-	12	1/4	9.5	-	22	-	22	22.8	22.0	32.5	11.2	42.6	18.0

**Bulkhead
Male Connector
SMCB**



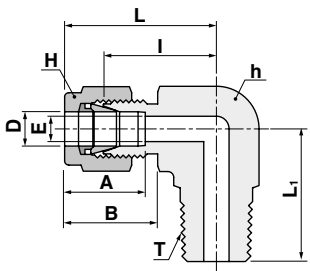
Part No.	Tube O.D		T	E	Width across flat				A	I	I ₁	L	L ₁	Panel Hole Drill Size	Panel Max. Thickness		
	D				Thread	Min.	h									H	
	in	mm					in	mm									in
SMCB-4-4N-H35	1/4	6.35	1/4NPT	4.82	5/8	15.87	5/8	15.87	9/16	14.28	15.24	45.97	26.16	53.34	33.52	11.50	10.16
SMCB-6-4N-H35	3/8	9.52	1/4NPT	7.11	3/4	19.05	3/4	19.05	11/16	17.46	16.76	50.03	29.46	57.40	36.83	14.68	11.17

**45° Male Elbow
SLBM**



Part No.	Tube O.D		T	E	Width across flat				A	B	I	L	L ₁	
	D				Thread	Min.	h							H
	in	mm					in	mm						
SLBM-4-4N-H35	1/4	6.35	1/4NPT	4.82	1/2	12.70	9/16	14.28	15.24	17.78	17.27	24.63	21.08	
SLBM-6-4N-H35	3/8	9.52	1/4NPT	7.11	5/8	15.87	11/16	17.16	16.76	19.30	20.57	27.94	22.86	

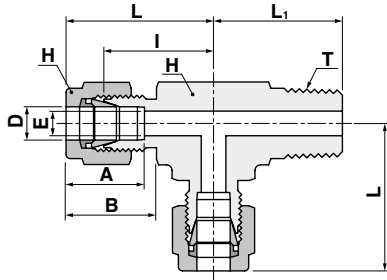
**Male Elbow
SLM**



Part No.	Tube O.D		T	E	Width across flat				A	B	I	L	L ₁	
	D				Thread	Min.	h							H
	in	mm					in	mm						
SLM-4-4N-H35	1/4	6.35	1/4NPT	4.82	1/2	12.70	9/16	14.28	15.24	17.78	19.81	27.18	23.87	
SLM-5-4N-H35	5/16	7.93	1/4NPT	6.35	9/16	14.28	5/8	15.87	16.25	18.54	21.33	29.77	24.50	
SLM-6-4N-H35	3/8	9.52	1/4NPT	7.11	5/8	15.87	11/16	17.46	16.76	19.30	23.11	30.48	25.40	
SLM-8-4N-H35	1/2	12.70	1/4NPT	10.41	13/16	20.64	7/8	22.22	22.86	21.84	25.90	36.06	28.30	
SLM-6M-4R-H35	-	6	1/4PT	4.8	-	12.7	-	14	15.3	17.7	19.6	27.0	23.4	
SLM-8M-4R-H35	-	8	1/4PT	6.4	-	14.3	-	16	16.2	18.6	21.3	28.8	24.4	
SLM-10M-4R-H35	-	10	1/4PT	7.9	-	17.5	-	19	17.2	19.5	23.9	31.5	26.2	
SLM-12M-4R-H35	-	12	1/4PT	9.5	-	20.6	-	22	22.8	22.0	25.9	36.0	28.2	
SLM-6M-4N-H35	-	6	1/4NPT	4.8	-	12.7	-	14	15.3	17.7	19.6	27.0	23.4	
SLM-8M-4N-H35	-	8	1/4NPT	6.4	-	14.3	-	16	16.2	18.6	21.3	28.8	24.4	
SLM-10M-4N-H35	-	10	1/4NPT	7.9	-	17.5	-	19	17.2	19.5	23.9	31.5	26.2	
SLM-12M-4N-H35	-	12	1/4NPT	9.5	-	20.6	-	22	22.8	22.0	25.9	36.0	28.2	

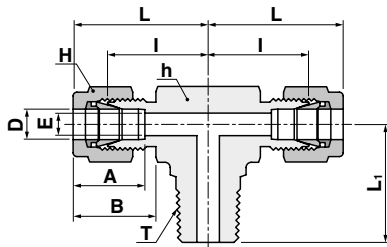


Male Run Tee

STRM

Part No.	Tube O.D		T	E	Width across flat				A	B	I	L	L ₁
	D				h		H						
	in	mm			in	mm	in	mm					
STRM-4-4N-H35	1/4	6.35	1/4NPT	4.82	1/2	12.70	9/16	14.28	15.24	17.78	19.81	27.18	23.87
STRM-5-4N-H35	5/16	7.93	1/4NPT	6.35	9/16	14.28	5/8	15.87	16.25	18.54	21.33	29.77	24.50
STRM-6-4N-H35	3/8	9.52	1/4NPT	7.11	5/8	15.87	11/16	17.46	16.76	19.30	23.11	30.48	25.40
STRM-8-4N-H35	1/2	12.70	1/4NPT	10.41	13/16	20.64	7/8	22.22	22.86	21.84	25.90	36.06	28.30
STRM-6M-4R-H35	-	6	1/4PT	4.8	-	12.7	-	14	15.3	17.7	19.6	27.0	23.4
STRM-8M-4R-H35	-	8	1/4PT	6.4	-	14.3	-	16	16.2	18.6	21.3	28.8	24.4
STRM-10M-4R-H35	-	10	1/4PT	7.9	-	17.5	-	19	17.2	19.5	23.9	31.5	26.2
STRM-12M-4R-H35	-	12	1/4PT	9.5	-	20.6	-	22	22.8	22.0	25.9	36.0	28.2
STRM-6M-4N-H35	-	6	1/4NPT	4.8	-	12.7	-	14	15.3	17.7	19.6	27.0	23.4
STRM-8M-4N-H35	-	8	1/4NPT	6.4	-	14.3	-	16	16.2	18.6	21.3	28.8	24.4
STRM-10M-4N-H35	-	10	1/4NPT	7.9	-	17.5	-	19	17.2	19.5	23.9	31.5	26.2
STRM-12M-4N-H35	-	12	1/4NPT	9.5	-	20.6	-	22	22.8	22.0	25.9	36.0	28.2

Male Branch Tee

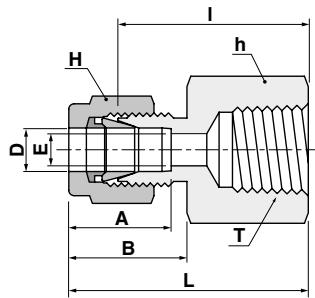
STBM

Part No.	Tube O.D		T	E	Width across flat				A	B	I	L	L ₁
	D				h		H						
	in	mm			in	mm	in	mm					
STBM-4-4N-H35	1/4	6.35	1/4NPT	4.82	1/2	12.70	9/16	14.28	15.24	17.78	19.81	27.18	23.87
STBM-5-4N-H35	5/16	7.93	1/4NPT	6.35	9/16	14.28	5/8	15.87	16.25	18.54	21.33	29.77	24.50
STBM-6-4N-H35	3/8	9.52	1/4NPT	7.11	5/8	15.87	11/16	17.46	16.76	19.30	23.11	30.48	25.40
STBM-8-4N-H35	1/2	12.70	1/4NPT	10.41	13/16	20.64	7/8	22.22	22.86	21.84	25.90	36.06	28.30
STBM-6M-4R-H35	-	6	1/4PT	4.8	-	12.7	-	14	15.3	17.7	19.6	27.0	23.4
STBM-8M-4R-H35	-	8	1/4PT	6.4	-	14.3	-	16	16.2	18.6	21.3	28.8	24.4
STBM-10M-4R-H35	-	10	1/4PT	7.9	-	17.5	-	19	17.2	19.5	23.9	31.5	26.2
STBM-12M-4R-H35	-	12	1/4PT	9.5	-	20.6	-	22	22.8	22.0	25.9	36.0	28.2
STBM-6M-4N-H35	-	6	1/4NPT	4.8	-	12.7	-	14	15.3	17.7	19.6	27.0	23.4
STBM-8M-4N-H35	-	8	1/4NPT	6.4	-	14.3	-	16	16.2	18.6	21.3	28.8	24.4
STBM-10M-4N-H35	-	10	1/4NPT	7.9	-	17.5	-	19	17.2	19.5	23.9	31.5	26.2
STBM-12M-4N-H35	-	12	1/4NPT	9.5	-	20.6	-	22	22.8	22.0	25.9	36.0	28.2

↗ TFP (Tube to Female Pipe)

Female Connector

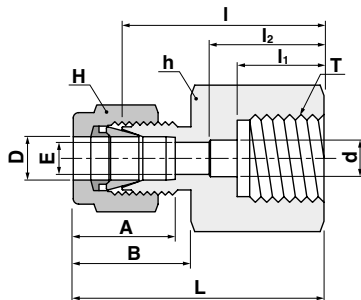
SCF



Part No.	Tube O.D		T	E	Width across flat				A	B	I	L
	D				h		H					
	in	mm			in	mm	in	mm				
SCF-4-4N-H35	1/4	6.35	1/4NPT	4.82	3/4	19.05	9/16	14.28	15.24	17.78	28.44	35.81
SCF-5-4N-H35	5/16	7.93	1/4NPT	6.35	3/4	19.05	5/8	15.87	16.25	18.54	29.46	36.83
SCF-6-4N-H35	3/8	9.52	1/4NPT	7.11	3/4	19.05	11/16	17.46	16.76	19.30	30.22	37.59
SCF-8-4N-H35	1/2	12.70	1/4NPT	10.41	1-3/16	20.64	7/8	22.22	22.86	21.84	30.22	40.38
SCF-6M-4R-H35	-	6	1/4PT	4.8	-	19	-	14	15.3	17.7	28.4	35.8
SCF-8M-4R-H35	-	8	1/4PT	6.4	-	19	-	16	16.2	18.6	29.5	37.0
SCF-10M-4R-H35	-	10	1/4PT	7.9	-	19	-	19	17.2	19.5	30.2	37.8
SCF-12M-4R-H35	-	12	1/4PT	9.5	-	22	-	22	22.8	22.0	30.2	40.3
SCF-6M-4N-H35	-	6	1/4NPT	4.8	-	19	-	14	15.3	17.7	28.4	35.8
SCF-8M-4N-H35	-	8	1/4NPT	6.4	-	19	-	16	16.2	18.6	29.5	37.0
SCF-10M-4N-H35	-	10	1/4NPT	7.9	-	19	-	19	17.2	19.5	30.2	37.8
SCF-12M-4N-H35	-	12	1/4NPT	9.5	-	22	-	22	22.8	22.0	30.2	40.3

Gauge Connector

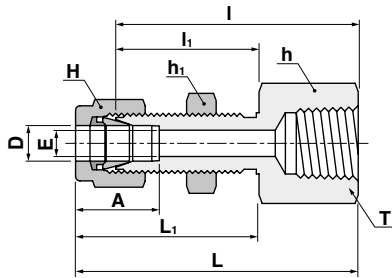
SCG



Part No.	Tube O.D		T	E	Width across flat				A	B	I	I ₁	I ₂	d	L
	D				h		H								
	in	mm			in	mm	in	mm							
SCG-4-4G-H35	1/4	6.35	1/4	4.82	3/4	19.05	9/16	14.28	15.24	17.78	30.22	12.95	17.00	5.60	37.59
SCG-5-4G-H35	5/16	7.93	1/4	6.35	3/4	19.05	5/8	15.87	16.25	18.54	30.98	12.95	-	-	38.60
SCG-6-4G-H35	3/8	9.52	1/4	7.11	3/4	19.05	11/16	17.46	16.76	19.30	31.75	12.95	-	-	39.12
SCG-8-4G-H35	1/2	12.70	1/4	10.41	1-3/16	20.64	7/8	22.22	22.86	21.84	31.80	12.95	-	-	41.95
SCG-6M-4G-H35	6	1/4	4.8	19	14	15.3	17.7	30.2	13	17.0	5.5	37.6	-	-	41.95
SCG-8M-4G-H35	-	8	1/4	6.4	-	19	-	16	16.2	18.6	31.0	13	-	5.5	38.5
SCG-10M-4G-H35	-	10	1/4	7.9	-	19	-	19	17.2	19.5	31.8	13	-	-	39.4
SCG-12M-4G-H35	-	12	1/4	9.5	-	22	-	22	22.8	22.0	31.8	13	-	-	41.9

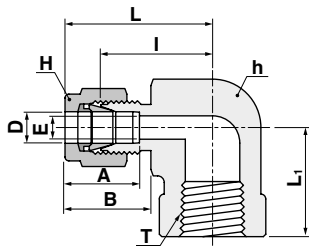


Bulkhead Female Connector

SCBF

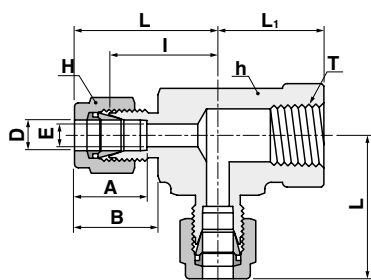
Part No.	Tube O.D.		T	E	Width across flat					A	I	I ₁	L	L ₁	Panel Hole Drill Size	Panel Max. Thickness	
	D				h	h ₁	H										
	in	mm			in	mm	in	mm									
SCBF-4-4N-H35	1/4	6.35	1/4	4.82	3/4	19.05	5/8	15.87	9/16	14.28	15.24	44.45	26.16	51.81	33.52	11.50	10.16
SCBF-6-4N-H35	3/8	9.52	1/4	7.11	3/4	19.05	3/4	19.05	11/16	17.46	16.76	47.75	29.46	55.11	36.83	14.68	11.17

Female Elbow

SLF

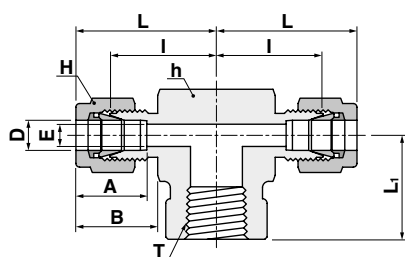
Part No.	Tube O.D.		T	E	Width across flat				A	B	I	L	L ₁
	D				h	H							
	in	mm			in	mm	in	mm					
SLF-4-4N-H35	1/4	6.35	1/4	4.82	11/16	17.46	9/16	14.28	15.24	17.78	22.35	29.71	22.35
SLF-5-4N-H35	5/16	7.93	1/4	6.35	11/16	17.46	5/8	15.87	16.25	18.54	23.11	30.48	22.35
SLF-6-4N-H35	3/8	9.52	1/4	7.11	11/16	17.46	11/16	17.46	16.76	19.30	23.87	31.24	22.35
SLF-8-4N-H35	1/2	12.70	1/4	10.41	13/16	20.64	7/8	22.22	22.86	21.84	25.90	36.06	22.35
SLF-6M-4N-H35	-	6	1/4	4.8	-	17.46	-	14	15.3	17.7	22.4	29.8	22.40
SLF-8M-4N-H35	-	8	1/4	6.4	-	17.46	-	16	16.2	18.6	23.1	30.6	22.40
SLF-10M-4N-H35	-	10	1/4	7.9	-	20.64	-	19	17.2	19.5	25.9	33.5	22.40
SLF-12M-4N-H35	-	12	1/4	9.5	-	20.64	-	22	22.8	22.0	25.9	36.0	22.40

Female Run Tee

STRF

Part No.	Tube O.D.		T	E	Width across flat				A	B	I	L	L ₁
	D				h		H						
	in	mm			in	mm	in	mm					
STRF-4-4N-H35	1/4	6.35	1/4	4.82	11/16	17.46	9/16	14.28	15.24	17.78	22.35	29.71	22.35
STRF-5-4N-H35	5/16	7.93	1/4	6.35	11/16	17.46	5/8	15.87	16.25	18.54	23.11	30.48	22.35
STRF-6-4N-H35	3/8	9.52	1/4	7.11	11/16	17.46	11/16	17.46	16.76	19.30	23.87	31.24	22.35
STRF-8-4N-H35	1/2	12.70	1/4	10.41	13/16	20.64	7/8	22.22	22.86	21.84	25.90	36.06	22.35
STRF-6M-4N-H35	-	6	1/4	4.8	-	17.46	-	14	15.3	17.7	22.4	29.8	22.40
STRF-8M-4N-H35	-	8	1/4	6.4	-	17.46	-	16	16.2	18.6	23.1	30.6	22.40
STRF-10M-4N-H35	-	10	1/4	7.9	-	20.64	-	19	17.2	19.5	25.9	33.5	22.40
STRF-12M-4N-H35	-	12	1/4	9.5	-	20.64	-	22	22.8	22.0	25.9	36.0	22.40

Female Branch Tee

STBF

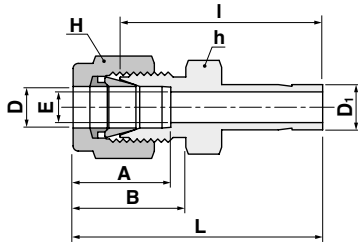
Part No.	Tube O.D.		T	E	Width across flat				A	B	I	L	L ₁
	D				h		H						
	in	mm			in	mm	in	mm					
STBF-4-4N-H35	1/4	6.35	1/4	4.82	11/16	17.46	9/16	14.28	15.24	17.78	22.35	29.71	22.35
STBF-5-4N-H35	5/16	7.93	1/4	6.35	11/16	17.46	5/8	15.87	16.25	18.54	23.11	30.48	22.35
STBF-6-4N-H35	3/8	9.52	1/4	7.11	11/16	17.46	11/16	17.46	16.76	19.30	23.87	31.24	22.35
STBF-8-4N-H35	1/2	12.70	1/4	10.41	13/16	20.64	7/8	22.22	22.86	21.84	25.90	36.06	22.35
STBF-6M-4N-H35	-	6	1/4	4.8	-	17.46	-	14	15.3	17.7	22.4	29.8	22.40
STBF-8M-4N-H35	-	8	1/4	6.4	-	17.46	-	16	16.2	18.6	23.1	30.6	22.40
STBF-10M-4N-H35	-	10	1/4	7.9	-	20.64	-	19	17.2	19.5	25.9	33.5	22.40
STBF-12M-4N-H35	-	12	1/4	9.5	-	20.64	-	22	22.8	22.0	25.9	36.0	22.40



↗ STC (Stub Tube Connector)

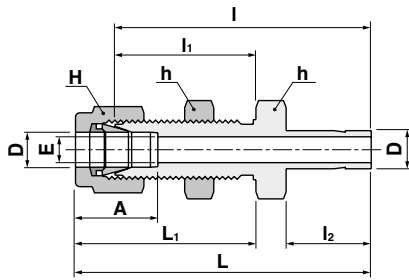
Reducer

SR



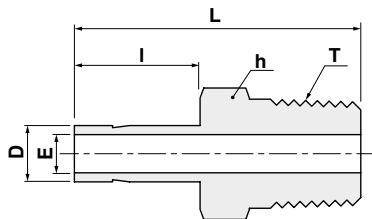
Part No.	Tube O.D				E	Width across flat				A	B	I	L
	D		D ₁			h		H					
	in	mm	in	mm		in	mm	in	mm				
SR-4-4-H35	1/4	6.35	1/4	6.35	4.82	1/2	12.70	9/16	14.28	15.24	17.78	31.75	39.11
SR-4-5-H35	1/4	6.35	1/4	6.35	4.82	1/2	12.70	9/16	14.28	15.24	17.78	32.51	39.87
SR-4-6-H35	1/4	6.35	3/8	9.52	4.82	1/2	12.70	9/16	14.28	15.24	17.78	33.27	40.64
SR-4-8-H35	1/4	6.35	1/2	12.70	4.82	9/16	14.28	9/16	14.28	15.24	17.78	38.86	46.22
SR-4-10-H35	1/4	6.35	5/8	15.87	4.82	11/16	17.46	9/16	14.28	15.24	17.78	40.64	48.00
SR-5-6-H35	5/16	7.93	3/8	9.52	6.35	9/16	14.28	5/8	15.87	16.25	18.54	34.54	41.91
SR-5-8-H35	5/16	7.93	5/16	7.93	6.35	9/16	14.28	5/8	15.87	16.25	18.54	40.13	47.49
SR-6-4-H35	3/8	9.52	1/4	6.35	4.82	5/8	15.87	11/16	17.46	16.76	19.30	34.03	41.40
SR-6-6-H35	3/8	9.52	3/8	9.52	7.11	5/8	15.87	11/16	17.46	16.76	19.30	35.81	43.18
SR-6-8-H35	3/8	9.52	1/2	12.70	7.11	5/8	15.87	11/16	17.46	16.76	19.30	41.14	48.51
SR-6-10-H35	3/8	9.52	5/8	15.87	7.11	11/16	17.46	11/16	17.46	16.76	19.30	42.92	50.29
SR-8-4-H35	1/2	12.70	1/4	6.35	4.82	13/16	20.64	7/8	22.22	22.86	21.84	34.79	44.95
SR-8-6-H35	1/2	12.70	1/2	12.70	7.11	13/16	20.64	7/8	22.22	22.86	21.84	36.57	46.73
SR-8-8-H35	1/2	12.70	1/2	12.70	9.90	13/16	20.64	7/8	22.22	22.86	21.84	42.16	52.32
SR-8-10-H35	1/2	12.70	5/8	15.87	10.41	13/16	20.64	7/8	22.22	22.86	21.84	43.68	53.84
SR-6M-4-H35	-	6	1/4	6.35	4.8	-	14	-	14	15.3	17.7	31.8	39.2
SR-6M-5-H35	-	6	1/4	6.35	4.8	-	14	-	14	15.3	17.7	32.5	39.9
SR-6M-6-H35	-	6	3/8	9.52	4.8	-	14	-	14	15.3	17.7	33.3	40.7
SR-6M-8-H35	-	6	1/2	12.70	4.8	-	14	-	14	15.3	17.7	38.9	46.3
SR-8M-6-H35	-	8	3/8	9.52	6.4	-	15	-	16	16.2	18.6	34.5	42.0
SR-8M-8-H35	-	8	5/16	7.93	6.4	-	15	-	16	16.2	18.6	40.1	47.6
SR-10M-6-H35	-	10	3/8	9.52	7.1	-	18	-	19	17.2	19.5	36.6	44.2
SR-10M-8-H35	-	10	1/2	12.70	7.9	-	18	-	19	17.2	19.5	42.2	49.8
SR-12M-8-H35	-	12	1/2	12.70	9.5	-	22	-	22	22.8	22.0	42.2	52.3
SR-6M-8M-H35	-	6	-	8	4.8	-	14	-	14	15.3	17.7	32.5	39.9
SR-6M-10M-H35	-	6	-	10	4.8	-	14	-	14	15.3	17.7	33.3	40.7
SR-6M-12M-H35	-	6	-	12	4.8	-	14	-	14	15.3	17.7	38.9	46.3
SR-8M-6M-H35	-	8	-	6	4.6	-	15	-	16	16.2	18.6	32.8	40.3
SR-8M-10M-H35	-	8	-	10	6.4	-	15	-	16	16.2	18.6	34.5	42.0
SR-8M-12M-H35	-	8	-	12	6.4	-	15	-	16	16.2	18.6	40.1	47.6
SR-10M-6M-H35	-	10	-	6	4.6	-	18	-	19	17.2	19.5	34.8	42.4
SR-10M-12M-H35	-	10	-	12	7.9	-	18	-	19	17.2	19.5	42.2	49.8
SR-10M-15M-H35	-	10	-	15	7.9	-	18	-	19	17.2	19.5	43.7	51.3
SR-12M-6M-H35	-	12	-	6	4.6	-	22	-	22	22.8	22.0	34.8	44.9
SR-12M-10M-H35	-	12	-	10	7.7	-	22	-	22	22.8	22.0	36.6	46.7
SR-12M-16M-H35	-	12	-	16	9.5	-	22	-	22	22.8	22.0	43.7	53.8
SR-16M-12M-H35	-	16	-	12	9.1	-	24	-	25	24.4	22.0	42.9	53.0

Bulkhead Adapter

SAB

Part No.	Tube O.D				E	Width across flat				A	I	I ₁	I ₂	L	L ₁	Panel Hole Drill Size	Panel Max. Thickness
	D		D ₁			h		H									
	in	mm	in	mm		in	mm	in	mm								
SAB-4-4-H35	1/4	6.35	1/4	6.35	4.82	5/8	15.87	9/16	14.28	15.24	48.51	26.16	15.74	55.88	33.52	11.50	10.16
SAB-6-6-H35	3/8	9.52	3/8	9.52	7.11	3/4	19.05	11/16	17.46	16.76	53.84	29.46	17.50	61.21	36.83	14.68	11.17
SAB-8-8-H35	1/2	12.70	1/2	12.70	10.41	15/16	23.81	7/8	22.22	22.86	62.73	31.75	23.11	72.89	41.91	19.44	12.70
SAB-10-10-H35	5/8	15.87	5/8	15.87	12.70	1-1/16	26.98	1	25.40	24.38	65.02	32.51	24.70	75.18	42.67	22.62	12.70

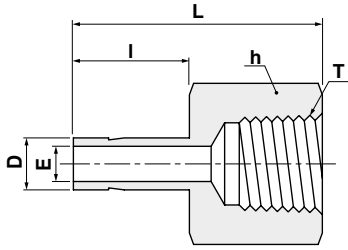
Male Adapter

SAM

Part No.	Tube O.D		T	E	Width across flat		I	L
	D				h			
	in	mm			in	mm		
SAM-4-4N-H35	1/4	6.35	1/4NPT	4.31	9/16	14.28	15.75	37.08
SAM-5-4N-H35	5/16	7.93	1/4NPT	5.58	9/16	14.28	16.80	38.10
SAM-6-4N-H35	3/8	9.52	1/4NPT	6.86	9/16	14.28	17.50	38.90
SAM-8-4N-H35	1/2	12.70	1/4NPT	9.40	9/16	14.28	23.20	44.50
SAM-6M-4R-H35		6	1/4PT	4.1		14	15.75	38.1
SAM-8M-4R-H35		8	1/4PT	5.6		14	16.50	39.1
SAM-10M-4R-H35		10	1/4PT	7.1		14	17.50	39.9
SAM-12M-4R-H35		12	1/4PT	8.8		14	23.50	46.5
SAM-6M-4N-H35		6	1/4NPT	4.1		14	15.75	38.1
SAM-8M-4N-H35		8	1/4NPT	5.6		14	16.50	39.1
SAM-10M-4N-H35		10	1/4NPT	7.1		14	17.50	39.9
SAM-12M-4N-H35		12	1/4NPT	8.8		14	23.50	46.5

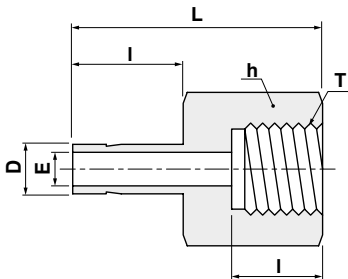


Female Adapter

SAF

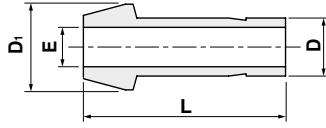
Part No.	Tube O.D.		T	E	Width across flat		I	L
	D				h			
	in	mm			in	mm		
SAF-4-4N-H35	1/4	6.35	1/4NPT	4.31	3/4	19.05	15.75	37.10
SAF-5-4N-H35	5/16	7.93	1/4NPT	5.58	3/4	19.05	16.80	37.59
SAF-6-4N-H35	3/8	9.52	1/4NPT	6.86	3/4	19.05	17.50	38.10
SAF-8-4N-H35	1/2	12.70	1/4NPT	9.40	3/4	19.05	23.20	43.43
SAF-6M-4R-H35	-	6	1/4PT	4.1	-	19	15.75	37.10
SAF-8M-4R-H35	-	8	1/4PT	5.6	-	19	16.50	37.60
SAF-10M-4R-H35	-	10	1/4PT	7.1	-	19	17.50	38.10
SAF-12M-4R-H35	-	12	1/4PT	8.8	-	19	23.50	43.70
SAF-6M-4N-H35	-	6	1/4NPT	4.1	-	19	15.75	37.10
SAF-8M-4N-H35	-	8	1/4NPT	5.6	-	19	16.50	37.60
SAF-10M-4N-H35	-	10	1/4NPT	7.1	-	19	17.50	38.10
SAF-12M-4N-H35	-	12	1/4NPT	8.8	-	19	23.50	43.70

Gauge Adapter

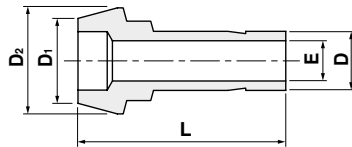
SAG

Part No.	Tube O.D.		T	E	E ₁	Width across flat		I	I ₁	L
	D					h				
	in	mm				in	mm			
SAF-4-4G-H35	1/4	6.35	1/4	4.31	5.50	3/4	19.05	15.75	12.9	35.30
SAG-6M-4G-H35	-	6	1/4	4.1	5.5	-	19	15.75	13.0	35.3
SAG-8M-4G-H35	-	8	1/4	5.6	5.5	-	19	16.5	13.0	33.0
SAG-10M-4G-H35	-	10	1/4	7.1	5.5	-	19	17.5	13.0	34.5
SAG-12M-4G-H35	-	12	1/4	8.8	5.5	-	19	23.5	13.0	40.1

Port Connector

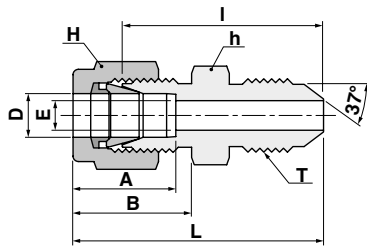
SCP

Part No.	Tube O.D		E	D ₁	L
	in	mm			
SCP-4-H35	1/4	6.35	4.31	9.39	24.64
SCP-5-H35	5/16	7.93	5.58	10.92	25.90
SCP-6-H35	3/8	9.52	6.86	12.70	26.16
SCP-8-H35	1/2	12.70	9.40	15.74	35.81
SCP-6M-H35	6	4.1	9.0	24.6	26.16
SCP-8M-H35	8	5.6	11.0	27.2	35.81
SCP-10M-H35	-	10	7.1	13.1	26.1
SCP-12M-H35	-	12	8.8	15.0	35.8
SCP-15M-H35	-	15	11.2	19.0	37.4
SCP-16M-H35	-	16	12.0	19.0	37.4

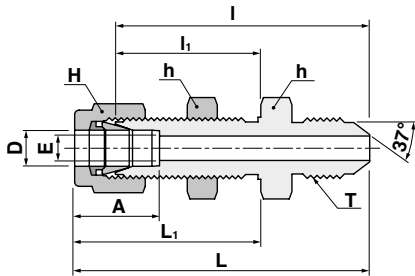
Reducing
Port Connector**SCRP**

Part No.	Tube O.D				E	D ₂	L
	D ₁	D	D	D ₁			
	in	mm	in	mm	Min		
SCRP-6-4-H35	3/8	9.52	1/4	6.35	4.31	12.70	24.89
SCRP-8-4-H35	1/2	12.70	1/4	6.35	4.31	15.74	29.21
SCRP-8-6-H35	1/2	12.70	3/8	9.52	6.86	15.74	30.48
SCRP-8M-6M-H35	-	8	-	6	4.1	11.0	24.7
SCRP-10M-6M-H35	-	10	-	6	4.1	13.1	25.0
SCRP-10M-8M-H35	-	10	-	8	5.6	13.1	26.0
SCRP-12M-6M-H35	-	12	-	6	4.1	15.0	29.1
SCRP-12M-8M-H35	-	12	-	8	5.6	15.0	29.8
SCRP-12M-10M-H35	-	12	-	10	7.1	15.0	30.4
SCRP-16M-6M-H35	-	16	-	6	4.1	19.0	30.4
SCRP-16M-12M-H35	-	16	-	12	8.8	19.0	36.2

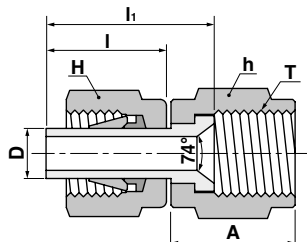


AN Union
SUA


Part No.	Tube O.D		AN Tube Flare Size		Straight Thread	E	Width across flat				A	B	I	L
	D						h		H					
	in	mm	in	mm	T	Min.	in	mm	in	mm				
SUA-4-4-H35	1/4	6.35	1/4	6.35	7/16-20	4.31	1/2	12.70	9/16	14.28	15.24	17.78	30.22	37.59
SUA-5-5-H35	5/16	7.93	5/16	7.93	1/2-20	5.84	9/16	14.28	5/8	15.87	16.25	18.54	30.98	38.35
SUA-6-4-H35	3/8	9.52	1/4	6.35	7/16-20	4.31	5/8	15.87	11/16	17.46	16.76	19.30	32.25	39.62
SUA-6-6-H35	3/8	9.52	3/8	9.52	9/16-18	7.11	5/8	15.87	11/16	17.46	16.76	19.30	32.25	39.62
SUA-8-8-H35	1/2	12.70	1/2	12.70	3/4-16	9.90	13/16	20.64	7/8	22.22	22.86	21.84	35.81	45.97

AN Bulkhead Union
SUBA


Part No.	Tube O.D		AN Tube Flare Size		Straight Thread	E	Width across flat				A	I	I ₁	L	L ₁	Panel Hole Drill Size	Panel Max. Thickness
	D						h		H								
	in	mm	in	mm	T	Min.	in	mm	in	mm							
SUBA-4-4-H35	1/4	6.35	1/4	6.35	7/16-20	4.31	5/8	15.87	9/16	14.28	15.24	46.48	26.16	53.84	33.52	11.50	10.16
SUBA-6-6-H35	3/8	9.52	3/8	9.52	9/16-18	7.11	3/4	19.05	11/16	17.46	16.76	49.78	29.46	57.15	36.83	14.68	11.17
SUBA-8-8-H35	1/2	12.70	1/2	12.70	3/4-16	9.90	5/16	23.81	7/8	22.22	22.86	55.62	31.75	65.78	41.91	19.44	12.70

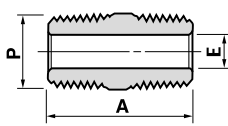
AN Adapter
SAA


Part No.	Tube O.D		AN Tube Flare Size		Straight Thread	Width across flat				A	I	I ₁
	D					h		H				
	in	mm	in	mm	T	in	mm	in	mm			
SAA-4-4-H35	1/4	6.35	1/4	6.35	7/16-20	9/16	14.28	9/16	14.28	15.74	15.74	21.33
SAA-6-6-H35	3/8	9.52	3/8	9.52	9/16-18	11/16	17.46	11/16	17.46	18.28	17.52	24.89
SAA-8-8-H35	1/2	12.70	1/2	12.70	3/4-16	7/8	22.22	7/8	22.22	21.59	23.11	31.75

↗ IPF (Instrument Pipe Fittings)

Close Nipple
(Male thread both ends)

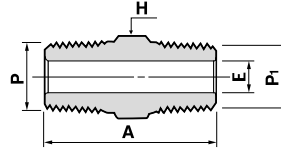
P-SCN



Part No.	Thread		A	E
	P			
P-SCN-4N-H35	1/4NPT		28.4	7.1
P-SCN-4R-H35	1/4PT		28.4	7.1

Hex Nipple
(Male thread both ends)

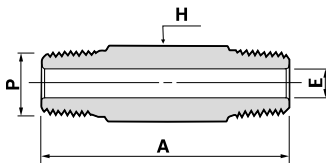
P-SHN



Part No.	Thread		A	E	Hex H
	P	P ₁			
P-SHN-4N-H35	1/4NPT	1/4NPT	35.3	7.1	14.2
P-SHN-4R-H35	1/4PT	1/4PT	35.3	7.1	14.2
P-SHN-4NR-H35	1/4NPT	1/4PT	35.3	7.1	14.2
P-SHN-4NG-H35	1/4NPT	1/4PF	36.8	5.8	19.05

Hex Long Nipple
(Male thread both ends)

P-SHLN

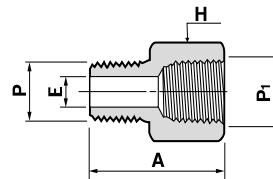


Part Number	Thread		A	E	Hex H
	P				
P-SHLN-4NL★-H35	1/4NPT	★	7.1	14.2	
P-SHLN-4RL★-H35	1/4PT	★	7.1	14.2	

★: Configure to order

Adapter
(Male to female thread)

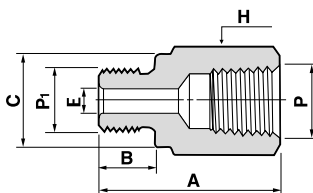
P-MFAA



Part No.	Thread		A	E	Hex H
	P				
P-MFAA-4N-H35	1/4NPT	1/4NPT	35.6	7.1	19.05
P-MFAA-4R-H35	1/4PT	1/4PT	35.6	7.1	19.05
P-MFAA-4RN-H35	1/4PT	1/4NPT	35.6	7.1	19.05
P-MFAA-4GN-H35	1/4PF	1/4NPT	33.3	5.8	19.05

Adapter
(Male ISO paralled to female thread)

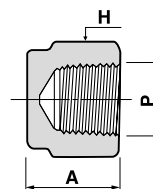
P-MFAB



Part No.	Thread		A	B	C	E	Hex H
	P ₁	P					
P-MFAB-4GN-H35	1/4PF	1/4NPT	33.3	11.2	17.8	5.8	19.05
P-MFAB-4GR-H35	1/4PF	1/4PT	33.3	11.2	17.8	5.8	19.05

Pipe Cap
(Female thread)

P-SC

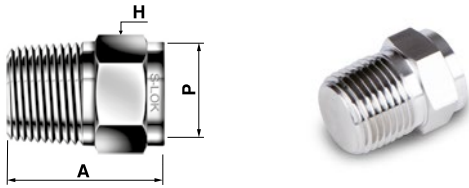


Part No.	Thread		A	Hex H
	P			
P-SC-4N-H35	1/4NPT		22.9	19.05
P-SC-4R-H35	1/4PT		22.9	19.05



Pipe Plug
(Male thread)

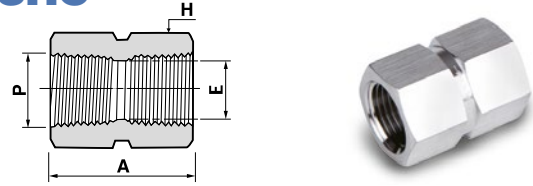
P-SP



Part No.	Thread P	A	Hex H
P-SP-4N-H35	1/4NPT	24.1	14.2
P-SP-4R-H35	1/4PT	24.1	14.2

Hex Coupling
(Female thread both ends)

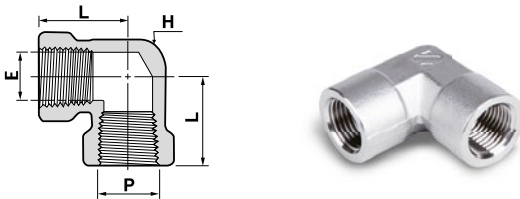
P-SHC



Part No.	Thread P	A	E	Hex H
P-SHC-4N-H35	1/4NPT	30.0	11	19.05
P-SHC-4R-H35	1/4PT	30.0	11	19.05

Elbow
(Female thread both ends)

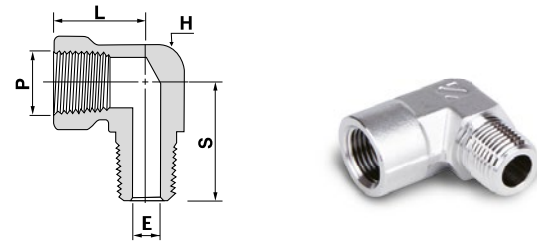
P-SL



Part No.	Thread P	L	E	Hex H
P-SL-4N-H35	1/4NPT	29.0	11	17.5
P-SL-4R-H35	1/4PT	29.0	11	17.5

Street Elbow
(Female to male thread)

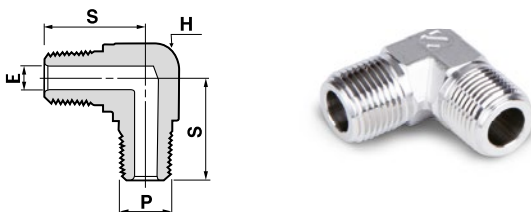
P-SSL



Part No.	Thread P	L	S	E	Hex H
P-SSL-4N-H35	1/4NPT	29.0	26.5	7.1	17.5
P-SSL-4R-H35	1/4PT	29.0	26.5	7.1	17.5

Male Elbow
(Male thread both ends)

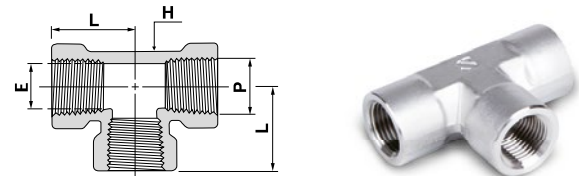
P-SML



Part No.	Thread P	L	E	Hex H
P-SML-4N-H35	1/4NPT	24.5	7.1	12.7
P-SML-4R-H35	1/4PT	24.5	7.1	12.7

Tee
(Female thread)

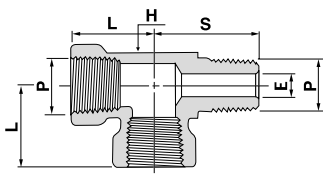
P-ST



Part No.	Thread P	L	E	Hex H
P-ST-4N-H35	1/4NPT	29.0	11	17.5
P-ST-4R-H35	1/4PT	29.0	11	17.5

Run Tee
(Female to male to Female thread)

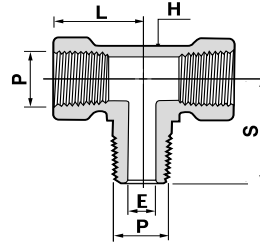
P-SRT



Part No.	Thread P	L	S	E	Hex H
P-SRT-4N-H35	1/4NPT	29.0	26.5	7.1	17.5
P-SRT-4R-H35	1/4PT	29.0	26.5	7.1	17.5

Branch Tee
(Female to male to male thread)

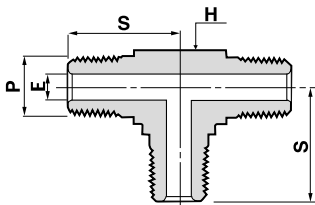
P-SBT



Part No.	Thread P	L	S	E	Hex H
P-SBT-4N-H35	1/4NPT	29.0	26.5	7.1	17.5
P-SBT-4R-H35	1/4PT	29.0	26.5	7.1	17.5

Male Tee
(Male thread)

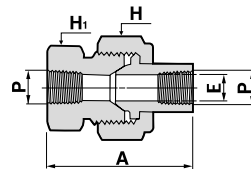
P-SMT



Part No.	Thread P	S	E	Hex H
P-SMT-4N-H35	1/4NPT	24.5	7.1	12.7
P-SMT-4R-H35	1/4PT	24.5	7.1	12.7

Union Ball Joint
(Female thread both ends)

P-SUJ



Part No.	Thread P	A	E	Hex H	Hex H ₁
P-SUJ-F-4N-H35	1/4NPT	59.4	9.1	34.9	30.2
P-SUJ-F-4R-H35	1/4PT	59.4	9.1	34.9	30.2



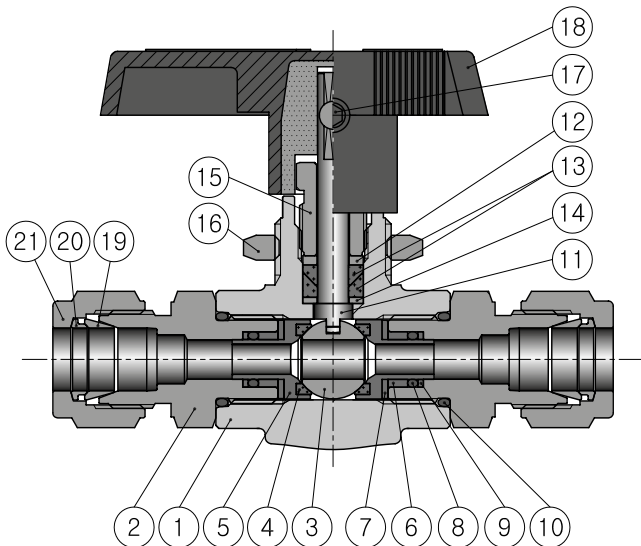
↗ SBV (S-LOK Ball Valves)

Features

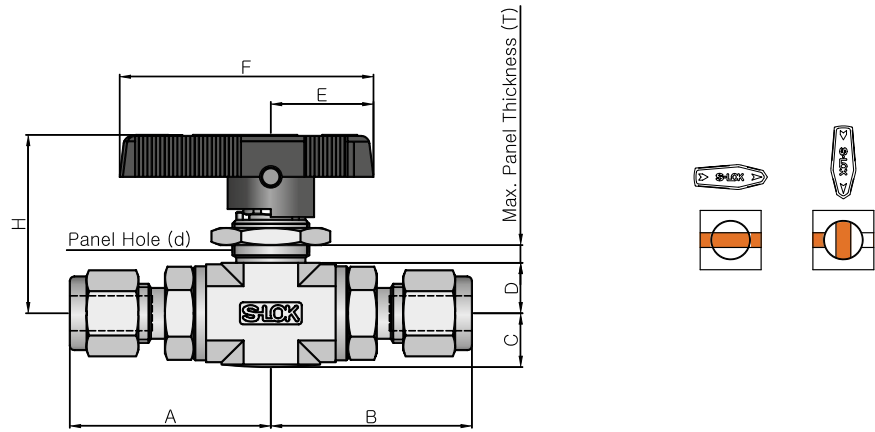
- Pressure rating up to 35Mpa @ 21°C.
- Temperature rating from -40°C to 85°C with standard PEEK seat.
- Free floating ball design provides seat wear compensation, therefore ensures leak proof shut-off at high pressure.
- High flow in a compact design.
- Panel mountable as standard.
- Blow out proof design with internally loaded stem.
- Micro-finished ball provides a positive seal.
- Low operating torques and positive handle stops.
- Handle indicates flow direction.
- Straight through flow path for minimum pressure drop.
- Bi-directional flow.
- Chevron packing standard for positive leak tight.
- 90 degree actuation.
- Every valve is 100% factory tested with the Nitrogen @ 1000psi (69bar).
- Variety of end connections include reliable S-LOK tube fittings
Male/Female NPT threads.



Materials of Construction

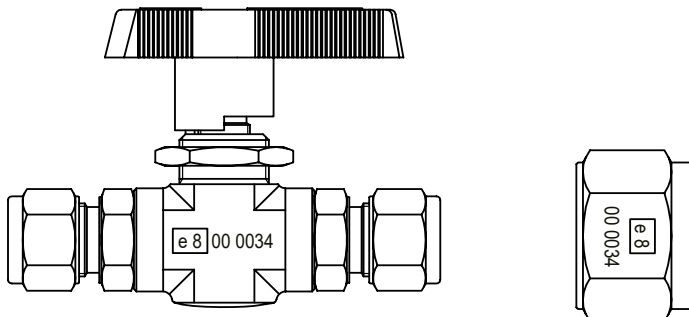


No	Component	Material
1	Body	A182 F316
2	Connector	SS316 / A479 or A276
3	Ball	SS316 / A479 or A276
4	Ball Seat	PEEK
5	Retainer	SS316 / A479 or A276
6	Seat Carrier Guide	SS316 / A479 or A276
7	Disc Spring	Stainless Steel
8	O-ring	EPDM
9	Backup Ring	PTFE
10	O-ring	EPDM
11	Stem	SS316 / A479 or A276
12	Stem Washer	SS316 / A479 or A276
13	Stem Packing (Low)	PTFE
	Stem Packing (Upper)	PTFE
14	Thrust Washer	PEEK
15	Packing Bolt	SS316 / A479 or A276
16	Lock Nut	Stainless Steel
17	Set Screw	Stainless Steel
18	Handle	Black Nylon
19	Front Ferrule	Stainless Steel
20	Back Ferrule	Stainless Steel
21	Nut	SS316 / A479 or A276



Ordering Number		Orifice		End Connections		Dimensions (mm)								
		mm	inch	Inlet	Outlet	A	B	C	D	E	F	H	d	T
SFBVC2	S-4T-H35	4.8	0.189	1/4" S-LOK		44.2		10.7	11.9	25.6	78.0	49.6	19.6	6.4
	F-4N-H35			1/4" Female NPT		38.4								
	M-4N-H35	6.4	0.25	1/4" Male NPT		41.1								
	S-6T-H35			3/8" S-LOK		45.7								
	S-6M-H35	4.8	0.189	6mm S-LOK		44.5								
	S-8M-H35	6.4	0.25	8mm S-LOK		45.2								
	S-10M-H35			10mm S-LOK		46.0								
SFBVC3	S-8T-H35			1/2" S-LOK		59.4		17.5	17.8	38.1	99.0	62.9	22.9	9.7
	S-10T-H35	10.3	0.406	5/8" S-LOK		59.4								
	S-12T-H35			3/4" S-LOK										
	S-12M-H35	9.5	0.375	12mm S-LOK		59.2								
	S-14M-H35			14mm S-LOK										
	S-15M-H35	10.3	0.406	15mm S-LOK										
	S-16M-H35			16mm S-LOK										

Marking Detail (EC-79 Certification)





Tierre Group S.p.a.

via dell'Industria, 18 - 20032 Cormano (MI)

Tel. +39 02 663088.1 - Fax +39 02 66304172

www.tierregroup.com - info@tierregroup.com

C.F. e P.IVA 12437570158

Cap. Soc. Euro 2.000.000,00 i.v. - REA MI-1558390