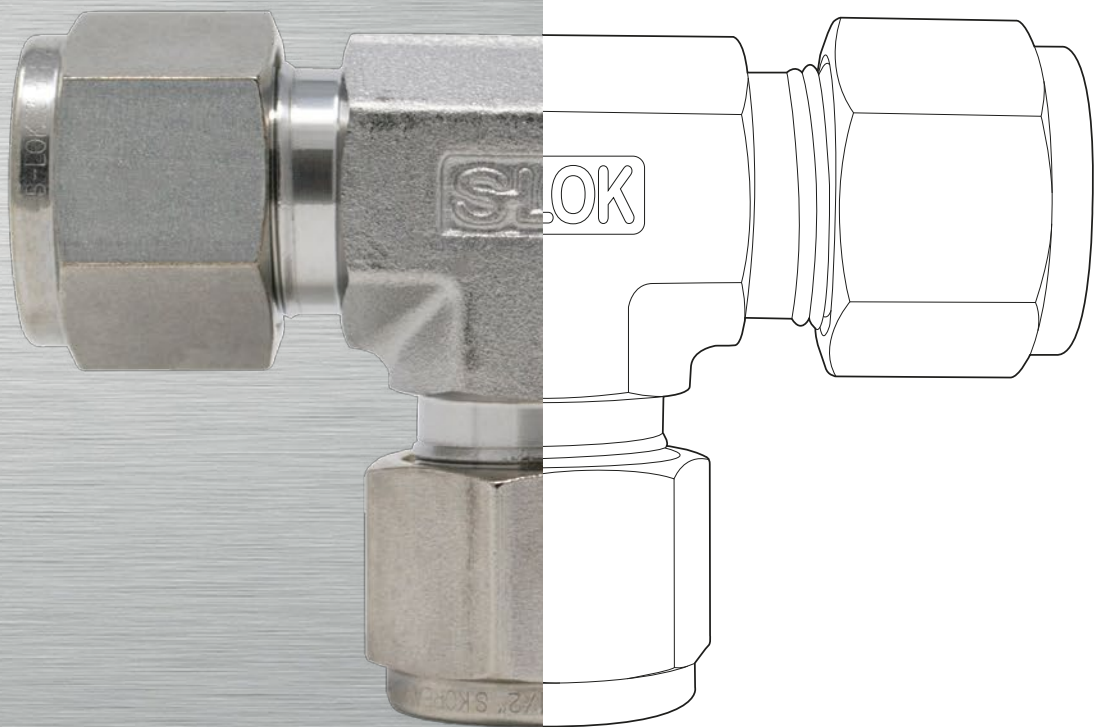


S-LOK VALVES & FITTINGS







Your Leak-Proof Flow & Control Solution Partner

S-LOK has been manufacturing tube fittings and valves for instrumentation, hydraulics, flow & control system, oil & gas E&P, refinery, petrochemical processing, shipbuilding & heavy industries, pulp & paper mill etc. **S-LOK** may not be familiar, but we have been serving our customers for two decades and our technology is more than enough to compete with any other brands in the world.

S-LOK has been focusing on a single goal "customer satisfaction" and has already established global networks in various industries including famous local (Korean) partners.

S-LOK has been investing heavily in developing new technology and innovative products. We will continue to offer new solutions to various industries and satisfy various global needs.

Our quality policy is to provide the best quality products by satisfying customer's requirements and each related rules & regulation through continuous quality innovation.

We have twenty-year history of creating values for our customers. We are committed to being your best leak-proof flow & control solution partner. We will do our best to create values for our partners.

Our Motto is Value Creation!

Your leak-proof flow & control solution partner, Hansun Engineering!

We Support Your Dreams!

Real champion is the person who are marking efforts day and night to be the best leader.

We also want to make our dreams come true in the world along with our valuable customers.

• **IN ANY INDUSTRIES**

- Energy Storage System / Hydrogen Energy
- Process Instrumentation / Oil and Gas E&P
- Refinery & Petrochemical
- Shipbuilding / Semiconductor
- CNG Vehicles / LNG Terminal

• **IN ANY COUNTRIES**

- North & South America
- Europe
- MENA(Middle East & North Africa)
- Asia
- Australia

• **WITH ANY SOLUTIONS**

- High pressure / Vacuum
- High Temperature / Cryogenic
- Shock / Vibration Resistance
- Lifetime Warranty
- Availability of spare parts in worldwide

Your value creation partner through innovation of technologies is Hansun Engineering in Korea!

**ENERGY
STORAGE SYSTEM**



**HYDROGEN
ENERGY**



SEMICONDUCTOR



LNG



**REFINERY
PETROCHEMICAL**



FITTINGS



S-LOK® Tube Fittings (Double Ferrule)

- Compression type double ferrule fittings
- Roll threaded construction
- Available variety of configurations
- Excellent vibration resistance/ Leak-proof sealing
- Gauge ability and retighten
- Stainless steel, Brass, Carbon steel, Alloy
- Sizes : 1/16 to 2 in. & 2 to 50mm tubing

S-LOK® Tube Fittings (Single Ferrule)

- Three piece simple design
- Molybdenum disulfide coated nuts to prevent galling and provide lubrication
- Single ferrule technology to provide excellent anti- vibration performance



Clean Fittings

Micro Weld & Forged Weld

- According to ASME B31.1 & B31.3
- Pressure ratings are also determined by temperature derating factors up to 1000°F (537°C).
- Compact design for mainly gas line of Semiconductor, FPD and other Industries.
- End Connection Type : TBW (Tube Butt Weld) by manual ATW (Automatic Tube Butt Weld) (Option)
- Sizes : 1/4 to 1 in. & 6 to 18mm tubing

Metal Gasket Face Seal

- Leak tight from vacuum positive pressure.
- Standard inside surface finish is 10µin (0.25µm) Ra (Option : 5µin (0.13µm) Ra.)
- Sizes : 1/4 to 1 in. & 6 to 18mm tubing



Bite Type Tube Fittings (DIN2353)

- According to DIN2353 & ISO 8434-1 standard
- Pressure rating up to 800bar (S series)
- Temperature rating up to 750°F (400°C)
- Two cutting edge single ring design
- Stainless steel, Carbon steel, Brass
- Sizes : 4 to 42mm tubing



Bite Type Tube Fittings (JIS B2351)

- According to JIS B2351 standard
- Pressure rating up to 500bar
- Temperature rating up to 572°F (300°C)
- single cutting ring design
- Stainless steel, Carbon steel, Brass
- Sizes : 4 to 42mm tubing
1/8(6A) to 1-1/2 in.(40A) piping



37° Flared Tube Fittings (SAE J514)

- According to SAE J514 & ISO 8434-2 standard
- Pressure rating up to 345bar
- Useable with either metric or inch tubes
- Vibration resistance
- Stainless steel, Carbon steel and Brass
- Sizes : 1/8 to 2 in. & 3 to 38mm tubing



Instrument Pipe Fittings

- According to ASME B31.1 & B31.3
- NPT, ISO/BSP, and SAE threads
- Rolled male threads
- Male threads are protected with cap
- Excellent threads constructed to ensure leak- proof & reliable systems
- Stainless steel, Carbon steel, Brass
- Sizes : 1/8 to 2 in. piping



SCO O-Ring Face Seal Fittings

- According to SAE J1453 & ISO 8434-3
- Sealing from vacuum to positive pressure within a wide range of temperature up to 550°F (287°C).
- Easy Installation & Disassembly
- Eliminating turbulence and dead zone within the Fitting
- Sizes : 1/4 to 1 in. tubing



Forged Pipe Fittings

- According to ASME B16.11 & JIS B2316 standard
- Pressure rating : class 2000, 3000, 6000, 9000
- Stainless steel, Carbon steel
- Sizes : 1/2 to 4 in. piping



Push-On Hose Fittings

- No use special tools can quick installation
- Easy and fast
- All push on-hose fittings are reusable
- Sizes : 1/4 to 1 in. hose



Hose Adapter Fittings

- Easy installation
- Reusable for other assembly
- Stainless steel, Brass
- Sizes : 1/8 in ~ 1 in. hose



Ultra Vacuum Fittings

- Temperature Rating : -25°F (-31°C) to 400°F (204°C)
- Assembled easy finger-tight. (Knurled Nut)
- All Stainless Steel 316 and FKM O-Ring
- The helium leak tested to a maximum leak rate of 4×10^{-9} atm. cc/s at ambient temperature.



Dielectric Fittings

- Electrical resistance of insulators at 70°F (20°C) : 10×10^6 at 10V (dc)
- Pressure rating : up to 5000psi (344bar)
- Temperature rating : -40°F (-40°C) to 200°F (93°C)
- Sizes : 1/4 to 1/2 in. & 10 to 12mm tubing



VALVES

Ball & Plug Valves



SBV10 / SBV20 Series

Bar Stock Ball Valves

- Pressure rating :
up to 1000psi (69bar) @ 100°F (38°C) with SBV10 Series
up to 2000psi (138bar) @ 100°F (38°C) with SBV20 Series
- Temperature rating : -44°F (-42°C) to 450°F (232°C)
- Butterfly handle or Key lock handle optional
- Locking device are available
- Sizes : 1/4 to 2 in. tubing and piping



SBV30 Series

One-Piece Instrument Ball Valves

- Pressure rating up to 3000psi (206bar) @ 100°F (38°C)
- Temperature rating : -65°F (-53°C) to 300°F (148°C)
- Sealing without system pressure
- 2-way, 3-way, 4-way, 5-way, 6-way, 7-way
- Sizes : 1/16 to 3/4 in. & 3 to 12 mm tubing
1/8 to 1/2 in. piping



SBV60 Series

High Pressure Ball Valves

- Pressure rating up to 10,000psi (689bar) @ 100°F (38°C)
- Temperature rating :
- 22°F (-30°C) to 355°F (180°C) with PCTFE Seat
- 65°F (-54°C) to 500°F (260°C) with PEEK Seat
- Panel mounting and locking device are available
- CNG/NGV available (SBVC Series)
- Sizes : 1/4 to 1 in. tubing and piping



SFBV60 Series**Forged High Pressure Ball Valves**

- Pressure rating up to 6000psi (413bar) @ 100°F (38°C)
- Temperature rating : -65°F (-54°C) to 350°F (177°C)
- Easy replacement ball seats
- CNG/NGV available (SFBVC Series)
- Sizes : 1/16 to 3/4 in. & 3 to 16 mm tubing
1/8 to 1/2 in. piping

**STBV60 Series****Trunnion Ball Valves**

- Pressure rating up to 6,000psi (413bar) @ 100°F (38°C)
- Temperature rating : -0°F (-17°C) to 450°F (232°C)
- CNG/NGV available (STBVC Series)
- Size : 1/4 to 1/2 in. & 6 to 12mm tubing
1/8 to 1/2 in. piping

**SDBV Series****Ball Valves for DIN Standard**

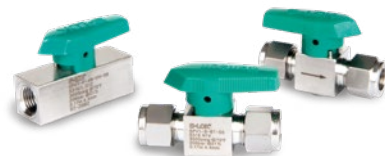
- Pressure rating up to 7200psi (500bar) @ 100°F (38°C)
- Temperature rating : -4°F (-20°C) to 210°F (100°C)
- Compact design with maximum orifice
- Handle is only available in cast stainless steel
- Sizes : 1/4 to 2 in. piping

**SOBV Series****Swing-Out Ball Valves**

- Pressure rating :
up to 3000psi (206bar) @ 100°F (38°C) with PEEK Seat
up to 2200psi (151bar) @ 100°F (38°C) with R.PTFE Seat
- Temperature rating : -20°F (-28°C) to 450°F (232°C)
- Three-piece swing-out & spring-loaded seats design
- Actuator mounting design
- Sizes : 1/4 to 1-1/2 in. & 6 to 38 mm tubing
1/8 to 1-1/2 in. piping

**SPV30 Series****Plug Valves**

- Pressure rating up to 3000psi (206bar) @ 100°F (38°C)
- Temperature rating : -10°F (-23°C) to 400°F (204°C)
- Stainless steel, Brass
- Flow throttling
- Easy replacement plug and O-ring
- Sizes : 1/8 to 1/2 in. tubing and piping



VALVES

Check, Relief & Excess Flow Valves



SCV30

Poppet Check Valves

- Pressure rating up to 3000psi (206bar) @ 100°F (38°C)
- Temperature rating : -10°F (-23°C) to 375°F (191°C)
- Stainless steel, Brass
- Cracking pressure : 1/3psi(0.02bar) to 100psi(6.89bar)
- Sizes : 1/8 to 1 in. tubing and piping



SCP30

One piece Check Valves

- Pressure rating up to 3000psi (206bar) @ 100°F (38°C)
- Temperature rating : -10°F (-23°C) to 375°F (191°C)
- Stainless steel, Brass
- Cracking pressure : 1/3psi(0.02bar) to 50psi(3.45bar)
- Sizes : 1/4 to 1/2 in. piping



SCA30

One-piece Adjustable Check Valves

- Pressure rating up to 3000psi (206bar) @ 100°F (38°C)
- Temperature rating : -10°F (-23°C) to 375°F (191°C)
- Stainless steel, Brass
- Cracking pressure : 3psi (0.2bar) to 600psi (41.3bar)
- Sizes : 1/4 to 1/2 in. piping



SCDA Series**Adjustable Check Valves**

- Pressure rating up to 3000psi (413bar) @ 100°F (38°C)
- Temperature rating : -10°F (-23°C) to 375°F (191°C) with FKM
- Stainless Steel, Brass
- Cracking pressure : 3psi (0.2bar) to 600psi (41.3 bar)
- Sizes : 1/4 in. & 6 to 8 mm tubing

**SCH60****High pressure Check Valves**

- Pressure rating up to 6000psi (413bar) @ 100°F (38°C)
- Temperature rating : -10°F (-23°C) to 375°F (191°C)
- Stainless steel
- Cracking pressure : 1/3psi (0.02bar) to 25psi (1.7bar)
- Sizes : 1/8 to 1 in. tubing
1/4 to 1 in. piping

**SRV Series****Relief Valves**

- Pressure rating up to 6000psi (413bar) @ 100°F (38°C)
- Temperature rating : -10°F (-23°C) to 400°F (204°)
- Stainless steel
- Cracking pressure :
 - SRV30 : 10psi (0.69bar) to 250psi (17.25bar)
 - SRV60 : 250psi (17.5bar) to 6000psi (413bar)
- Sizes : 1/4 to 1/2 in. tubing and piping

**SRV60C Series****Relief Valves**

- Pressure rating up to 6000psi (413bar) @ 100°F (38°C)
- Temperature rating : -15°F (-26°C) to 400°F (204°) with FKM O-ring
- Adjusts to provide desired set pressure
- Provides elastomer to metal seal for positive shutoff at seat
- Set pressure from 200 psi to 5500 psi
- Sizes : 1/2 to 1 in. piping

**SEV Series****Excess Flow Valves**

- Pressure rating up to 6000psi (413bar) @ 100°F (38°C)
- Temperature rating : -10°F (-23°C) to 400°F (204°) with FKM O-ring
- Spring-loaded actuation
- Automatic reset
- Stainless steel
- Sizes : 1/4 to 1/2 in. & 6 to 12mm tubing
1/8 to 1/2 in. piping



VALVES

Needle & Metering Valves



SNV50 Series

Integral Bonnet Needle Valves

- Pressure rating up to 5000psi (344bar) @ 100°F (38°F)
- Temperature rating : -65°F (-54°C) to 450°F (232°C)
- Stainless steel, Brass, and Alloy
- In-Line or Angle pattern
- Vee stem, Regulating stem, Soft seat
- Sizes : 1/8 to 3/4 in. tubing
1/8 to 1/2 in. piping



SBNV60 Series

Integral Bonnet Bar Stock Needle Valves

- Pressure rating up to 6000psi (413bar) @ 100°F (38°C)
- Temperature rating : -65°F (-54°C) to 450°F (232°C)
- Stainless steel, Alloy
- In-Line or Angle pattern
- Vee stem, Regulating stem, Soft seat
- Sizes : 1/4 to 1/2 in. tubing
1/4 to 3/4 in. piping



SUNV60 Series

Union Bonnet Needle Valves

- Pressure rating up to 6000psi (413bar) @ 100°F (38°C)
- Temperature rating :
up to 572°F (300°C) with PTFE packing
up to 1200°F (649°C) with GRAFOIL packing
- Non-rotating globe type stem tip
- Sizes : 1/8 to 1 in. tubing and piping



SHNV100 Series**High Pressure Needle Valves**

- Pressure rating up to 10,000psi (689bar) @ 100°F (38°C)
- Temperature rating : -65°F (-54°C) to 450°F (232°C)
- Stainless steel, Brass, and Alloy
- In-Line or Angle pattern
- Vee stem, Regulating stem, Soft seat
- Sizes : 1/4 to 3/4 in. piping

**SQNV Series****Square Bar Stock Needle Valves**

- Pressure up to 6,000psig (413bar) @ 100°F (38°C)
- Temperature rating: -20°F (-28°C) to 400°F (204°C)
- Compact design & low operating torque
- Non-rotating stem tip design
- Sizes : 1/8 to 1/2 in. tubing and piping

**SDNV Series****Non Rotating Stem Needle Valves**

- Pressure rating up to 3,000psi (206bar) @ 100°F (38°C)
- Temperature rating : -20°F (-28°C) to 204°F (93°C)
- Compact design
- Non-rotating stem design
- Sizes : 1/8 to 3/8 in. tubing
1/8 to 1/2 in. piping

**STV50 Series****3-way Test Cock Valves**

- Pressure rating up to 5000psi (344bar) @100°F (38°C)
- Temperature rating :
up to -65°F (-54°C) to 450°F (232°C) with PTFE packing
up to -65°F (-54°C) to 600°F (315°C) with PEEK packing
- Stainless steel and Brass
- Sizes : 1/8 to 1/2 in. & 6 to 12mm tubing
1/8 to 3/8 in. piping

**SMTV Series****Metering Valves**

- Pressure rating :
up to 2000psi (137bar) @ 100°F (38°C) with SMTV1,2 Series
up to 1000psi (69bar) @ 100°F (38°C) with SMTV3 Series
- Temperature rating : -10°F (-23°C) to 400°F (204°C) with FKM O-ring
- Stainless, Brass
- Variety of handle options , handle stop design
- Flow setting lock system
- Sizes : 1/16 to 1/4 & 3 to 6mm tubing
1/8 to 1/4 in. piping



VALVES

Other Valves



SSB/SDB

Block & Bleed Valves

- Pressure rating : class 150 (20bar) to class 2500 (420bar)
- Temperature rating :
 - up to 482°F (250°C) with PEEK seat
 - down to -320°F (-196°C) with PCTFE seat
- Stainless steel, Carbon steel, Duplex Stainless steel
- Saving on space and weight
- Easy installation and maintenance
- Sizes : 1/2 to 2 in. flange and piping

SMNF Series

Monoflanges

- Pressure rating : class 150 (20bar) to class 2500 (420bar)
- Temperature rating :
 - up to 450°F (232°C) with PTFE packing
 - up to 850°F (454°C) with GRAPHITE packing
- Stainless steel, Carbon steel, Duplex Stainless steel
- Sizes : 1/2 to 2 in. flange



SMV Series

Manifolds Valves

- Pressure rating up to 6000psi (413bar) @ 100°F (38°C)
- Temperature rating : -65°F (-54°C) to 1200°F (648°C)
- Stainless steel
- 2V, 3V and 5V as standard
- Remote or Direct mounting
- Non-rotating globe stem tip



SGRV60 Series

Gauge & Gauge Root Valves

- Pressure rating up to 6000psi (413bar) @ 100°F (38°C)
- Temperature rating : -65°F (54°C) to 450°F (232°C)
- Non-rotating globe stem tip
- Grafoil packing for high temperature available
- Standard gauge valve, longer body gauge root valve and extended 4" long body
- Multi-port designs and Block and Bleed style
- Sizes : 1/2 to 3/4 in. piping



SRPV60 Series**Rising Plug Valves**

- Pressure rating up to 6000psi (413bar) @ 100°F (38°C)
- Temperature rating : -20°F (-29°C) to 250°F (121°C)
- Stainless steel
- Replaceable soft seat
- ACETAL, PEEK or PFA seats
- Non-rotating globe type stem tip
- Sizes : 1/4 to 3/4 in. piping

**SBLV Series****Bleed Valves**

- Pressure rating up to 10000psi (689bar) @ 100°F (38°C)
- Temperature rating : -65°F (-54°C) to 850°F (454°C)
- Stainless steel
- CNG/NGV available
- Sizes : 1/8 - 1/2 in. piping

**SPUV Series****Purge Valves**

- Pressure rating up to 4,000psi (275bar) @ 100°F (38°C)
- Temperature rating : -65°F (-54°C) to 600°F (315°C)
- Stainless Steel, Carbon Steel, Brass
- Vent bore bleeds excessive liquid or gas from the system lines.
- Sizes : 1/8 to 1/2 in. piping

**SFDV Series****Diaphragm Valves**

- Pressure rating up to 145psi (10bar) @ 100°F (38°C)
- Temperature rating : -23°F (10°C) to 176°F (80°C)
- Ni-Co Alloy material diaphragm for strength and corrosion resistance
- Fully contained seat design minimizes particle generation
- Maximize flow capacity & minimize entrapment areas
- Sizes : 1/4 to 3/4 in. tubing

**STGV Series****Toggle Valves**

- Pressure rating :
up to 300psig (20.6barg) @ 100°F (38°C) with STGV1 Series
up to 200psig (13.7barg) @ 100°F (38°C) with STGV2 Series
- Temperature rating up to 200°F (93°C)
- Quick open and close
- Panel mountable
- Sizes : 1/8 to 1/2 in. & 3 to 12mm tubing
1/8 to 3/8 in. piping



ETC.



SQCT/SQF Series Quick Connectors

- Pressures rating : up to 3000 psi (206 bar) with SQCT Series
up to 6000 psi (413 bar) with SQF Series
- Temperature rating : -10°F (-12°C) to 400°F (204°C) with FKM O-ring
- Quick and easy operation, Coupling and uncoupling without tools
- The stems are connected to the body of the same series and size
- When coupled, the valve opens automatically
- When uncoupled, the valve automatically closes
- Single-End Shut-off (SE) stems are open while separated from the body
- Double-End Shut-off (DE) stems shut off while separated from the body

SFI30/SFT60 Series

In-Line Filters/Tee Filters

- Pressure rating :
up to 3000psi (206bar) @ 100°F (38°C) with SFI Series
up to 6000psi (413bar) @ 100°F (38°C) with STF Series
- Gas and liquid filtration
- Micron filtering ranges : 0.5, 2, 7, 15, 60 and 90 microns
- Replaceable sintered elements Stainless steel, Brass
- CNG/NGV available
- Sizes : 1/8 to 1/2 in. tubing and piping



SHFH Series

Metal Flexible Hose

- Working pressures from vacuum up to 3600 psig (248 bar)
- Temperature rating : -325°F (-200°C) to 850°F (454°C)
- All-metal flexible hoses increase corrosion resistance
- SS316L single braid layer increases hose pressure containment
- Custom assemblies and length available
- Sizes : 1/4 to 1/2 in. tubing and piping



S-detec Liquid Gas Leak Detectors

- **S-detec** liquid gas leak detectors detect gas leaks in hard-to-reach areas.
- Flexible tube extends for hard-to-reach areas.
- Detects even on very small leaks and vertical surfaces.
- Easy to use, non-toxic, non-corrosive, non-flammable and free of chlorine
- **S-detec** liquid evaporates cleanly after testing
- Composition : Distilled water, glycerine and others
- Temperature range : -2°C to 93°C (28°F to 200°F)

⚠ Use S-detec liquid gas leak detectors only on external surfaces.

Global Network



EUROPE

Sweden, Norway, Netherlands, Germany, Swiss, Hungary, Italy, Russia, Spain, Czech Republic

MIDDLE EAST

Turkey, Israel, Egypt, Kuwait, UAE, Saudi Arabia, Iran, South Africa

ASIA

India, Singapore, Malaysia, Vietnam, Indonesia, China, Korea, Japan

OCEANIA

Australia, New Zealand

AMERICA

Canada, United States, Mexico, Chile



Certificate List



DNL-GL



BV



Lloyd's



CCS



RMRS



KR



NK



ABS



TR-CU (EAC)



ECE R110



Tierre Group S.p.a.

via dell'Industria, 18 - 20032 Cormano (MI)

Tel. +39 02 663088.1 - Fax +39 02 66304172

www.tierregroup.com - info@tierregroup.com

C.F. e P.IVA 12437570158

Cap. Soc. Euro 2.000.000,00 i.v. - REA MI-1558390